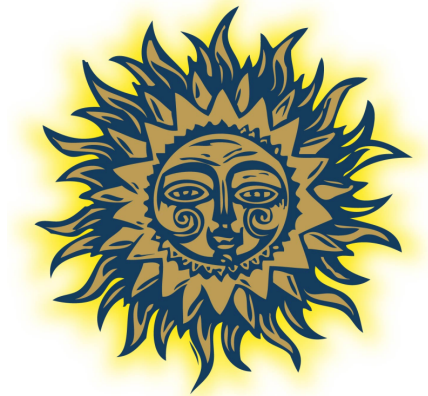


GODDESS

A SOLAR WRITER REPORT
FOR CAROL ANN LIBRA-MOON



WRITTEN BY BRIAN CLARK & STEPHANIE
JOHNSON

Compliments of:-

Libra Moon Astrology

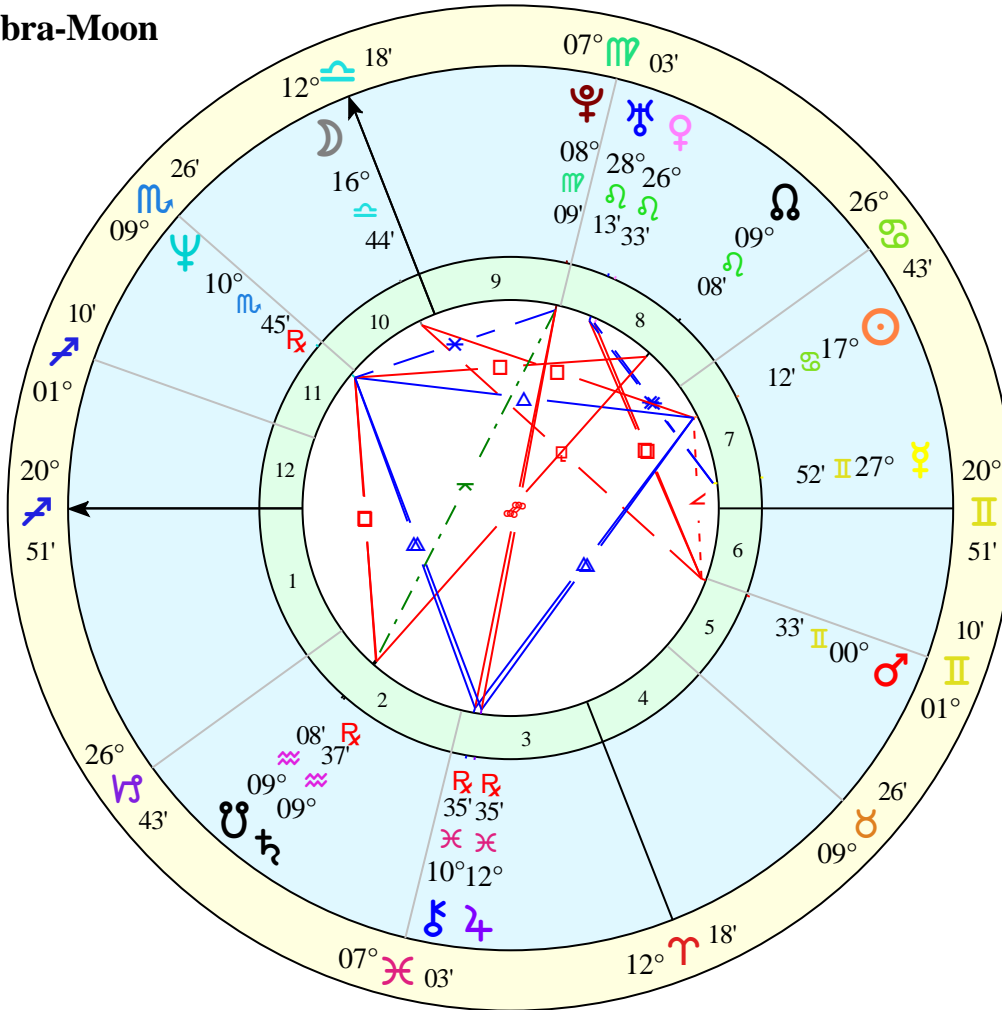
106 Rock Run Rd
Columbia Cross Roads, PA 16914

www.libramoonastrology.com

Carol Ann Libra-Moon

Natal Chart

Jul 9 1962
 18:37 EDT +4:00
 Sellersville
 40°N21'14"
 075°W18'19"
 Tropical
 Placidus



Key

Abbr	Asteroid
Cer	Ceres
Pal	Pallas Athena
Jun	Juno
Ves	Vesta
Hyg	Hygieia
Ari	Ariadne
Eur	Europa

Abbr	Asteroid
Pan	Pandora
Mne	Mnemosyne
Hec	Hecate
Cas	Cassandra
Med	Medea

Astrological Summary

Chart Point Positions: Carol Ann Libra-Moon

Abbr	Asteroid	Sign	Position	House	Comment
Cer	Ceres	Cancer	13°Cn55'	7th	
Pal	Pallas Athena	Gemini	0°Ge05'	5th	
Jun	Juno	Cancer	15°Cn06'	7th	
Ves	Vesta	Cancer	19°Cn06'	7th	
Hyg	Hygieia	Pisces	6°Pi49'	2nd	
Ari	Ariadne	Capricorn	23°Cp24'	1st	
Eur	Europa	Libra	13°Li04'	10th	
Pan	Pandora	Libra	28°Li07'	10th	
Mne	Mnemosyne	Leo	19°Le54'	8th	
Hec	Hecate	Gemini	13°Ge14'	6th	
Cas	Cassandra	Scorpio	15°Sc51'	11th	
Med	Medea	Leo	19°Le33'	8th	

Introduction



The Goddess is the custodian of life's mysteries and the primal world of archetypal forces. As representative of the world soul she engages us in the sacred rites of nature and reanimates life through the cycles of birth and death. Goddess culture flourished in the prehistoric period when magical consciousness prevailed, supernatural forces were deified and natural forces were revered. As consciousness developed through its phases the wisdom of the goddess was buried beneath the rational constructs of a scientific knowledge that erased the mysteries from life and excluded the magical processes.

With the advent of the asteroids the wisdom of the goddess is once again available to consciousness. Goddess wisdom reveals in the ancient wisdom of cycles, the intelligence of the inner life, the sanctity of divination, the mystery of healing and the necessity for sacrifice and ritual. The ancient feminine wisdom of the goddesses embraced all phases of life, celebrated its mysteries, ritualized its passages and knew the power of the natural world. The Solar Writer - Goddess report celebrates twelve goddesses and heroines and seeks their wisdom and guidance.

Goddess Mythology



Mythology serves as a psychological record of human development recording the imagination and symbols of the culture. Mythic stories speak to the inner life as they deal with universal themes and truths illustrating the archetypal forces that influence the course of the human drama. In archaic societies myths offered an explanation of the world and its creation, the cycle of birth, growth and death, how things came into existence as well as how they disappeared. In contemporary times we have scientific explanations for many of the ancient mysteries, but myth is just as valuable to help us to imagine our own origins and invest our lives with meaning. Mythic themes stir the imagination and broaden the horizon of the individual's story placing it in a context of a larger story.

Mythology is the link between the magical phase of being when consciousness participates in nature and the rational phase when we are separated from the natural world. The magical phase embraces the culture of the Great Goddess when life is full of mystery and wonder and we are one with the natural order, not separated or expelled from it. In this phase all nature is sacred as all life is invested with the divine. The asteroids are surrogates of the Great Goddess and reconnect us to her culture. As emissaries the asteroid goddesses and heroines invest life with the sacred, value imagination and mystery and inspire ritual and sacrifice in order to reconnect to the wellsprings of her magical forces.

Following is a summary of their genealogy and mythic tradition. Let the myths resonate with your imagination and speak to you in their own way.

The Roman goddess Ceres is also known as Olympian goddess, Demeter. She is the daughter of the Titan Cronus and Rhea and mother of Persephone. She is the Corn Goddess who personifies the agricultural cycle of fertility and harvest, as well as loss and renewal through her daughter Persephone.

The Olympian goddess Pallas Athena was a daughter of Zeus, born from her father's head after he had swallowed Metis. The Romans referred to her as Minerva. She is revered as representing the wisdom of reflection and strategy.

The Roman goddess Juno is also known as the Olympian goddess, Hera. She is the daughter of the Titan Cronus and Rhea and mother to Ares, Hephaestus and Hebe. She is the goddess of Marriage and

Social Customs who oversees the seasons of a woman's life.

The Roman goddess Vesta is also known as the Olympian Goddess Hestia. She is the daughter of the Titan Cronus and Rhea and is the goddess of the Hearth who embodies sacred space.

Hygieia was the daughter of the Greek god of healing, Asclepius and the beloved goddess of Health. She is the sister of other minor healing deities and heroes including Panacea, Machaon and Podalirius. As the goddess of Health, Hygieia is the giver and preserver of well being whose function is to maintain a healthy relationship between body and soul.

The Cretan goddess Ariadne was from the Minoan dynasty. She is the daughter of King Minos and Queen Pasiphaë, granddaughter of Helios and Zeus. She is sister of Phaedra and half-sister to the Minotaur. As the wife of Dionysus, Ariadne embodies the sacred marriage having endured the trials of betrayal and abandonment.

Europa was a Phoenician princess, sister to Cadmus and matriarch of the Minoan dynasty, mother to King Minos and grandmother of Ariadne and Phaedra. She represents the creative and earthy process that supports and guides worldly success.

Pandora was the first woman, shaped by Hephaestus, to be the harbinger of a new age. She was married to Epimetheus and was the mother of Pyrrha. As a representative of the ancient ways of the goddess, Pandora brings the gift of hope.

Mnemosyne was a Titaness, a daughter of Gaia and Uranus, known as the goddess who personified the faculty of memory. As the mother to the Nine Muses she represents enchantment, inspiration and the power of remembering.

The goddess Hecate was the daughter of Perses and Asteria, the granddaughter of Phoebe, and a powerful goddess revered by all the gods. Later she became an attendant to Persephone. As an underworld goddess she was represented in her three-fold nature and was worshipped at the crossroads and as the guardian of transitions.

Cassandra was the daughter of Priam and Hecuba, the regents of the powerful dynasty of Troy. She was the twin sister to Helenus and sister to seventeen other siblings including Paris and Hector. From an early age she had oracular ability, yet no one believed her. Cassandra carries the feminine mysteries of divination even in a contemporary world that devalues the sacred tradition.

Medea was the Princess of Colchis, granddaughter of the Sun god, Helios and niece of the sorceress, Circe. Medea is the great witch of the Greek myths, knowledgeable in herbs, healing and the art of metamorphosis.

Ceres - The Earth Mother



Astrologically the goddess Ceres represents the feminine wisdom that acknowledges loss. Loss is intricately woven into the tapestry of life; attachment, separation and loss are part of life's greatest mystery. Feminine wisdom knows that grief is only one phase of the great wheel and mourning allows the process to be complete so that life may be renewed. Following is a portrayal of the goddess Ceres in your natal horoscope.

Ceres is in the 7th House

You are a warm and loving mate, quietly seeking a partner who believes in love, marriage and all that this entails. When you find the right person you are willing to give a great deal to this union, perhaps even sacrificing a little of yourself in order to maintain the relationship. It is most likely that you will form a strong and lasting bond with a partner who values and appreciates your caring manner. However, you do need to be wary of becoming too self-sacrificing or too demanding. Martyrdom does not equal longevity in marriage. You should not put up with autocratic behavior, but then neither should you display it.

Equality needs to be your firm focus, rather than dependency or attachment. Ironically the more that you try to hold on to someone near and dear the more likely that you are to lose him or her. Therefore you need to let go, embrace each person's differences and accept the changes that occur in any long-term relationship. It is true that you may be required to nurture your partner, perhaps through an illness or some form of loss; however, you also gain many positives.

It is not just your marriage that is beneficial. Business partnerships are also advantageous. In any business partnership it is necessary to forge a close bond with the other in order for you to feel productive and creative. Through the strong attachment to your business partner you are able to feel secure and confident. You may enter into a contract with your spouse or be part of a family business. You offer a strong sense of security and stability to your partner and to any business associate as well.

This is a significant placement of the goddess Ceres indicating that your creativity really sings when you are working closely with another person.

Ceres is in Cancer

Food plays a central role in your life because it is the primary way that you take care of yourself and loved ones. You are likely to enjoy preparing and eating food both by yourself and with other people. Feeding your family and friends can be a source of joy. Of course other aspects of your chart may indicate that you are not a great cook but rather a true appreciator of fine food. If this is the case then you may prefer to eat out or have other people cook for you rather than preparing your own meals. Either way you are likely to enjoy many pleasurable meals seated at large tables with friends and relatives. It is also possible that you suffer from food allergies and therefore benefit from following a strict diet. However, this will largely depend on other aspects of your birth chart and you will still enjoy your food.

Your relationship with your mother is also likely to play a significant role in your life, affecting the way in which you relate to those close to you. The process of separating from your mother deeply affects you. Hopefully you have a close and warm bond with your mother, or a key mother figure, and develop a sense of security and comfort before maturing and leaving home. If your bond with your mother is not a positive one then you are likely to feel abandoned. You will then need to ensure that you do not abandon your own children, or overprotect them. This is particularly true for female children with whom you feel a strong affinity.

You may feel a strong attachment to your immediate family members, enjoying the sense of belonging that results from strong family ties. However, it is also possible that you enjoy looking after other people's children or underprivileged members of society. Like the crab you are able to retreat to your own home when necessary, but are also eager to strike out into unknown territory. Therefore you could be interested in a career or hobby in the fields of teaching, childcare work, nursing, social work, trade unionism, multi-cultural education, and the hospitality industry.

On the whole this is a constructive placement of the goddess Ceres as there are ample opportunities in your life to express your close bond to those you love. Seasons come and go and you enjoy the cyclical nature of family life.

Pallas Athena - The Wisdom Of The Warrior



In astrology the goddess Pallas Athena represents the reflection and meditation that develops out of the turmoil of chaos and uncertainty, helping us to become more strategic and deliberate in our actions. Metis is the valued intelligence that guides our instincts and plans strategically and arises into consciousness at exactly the right moment. Pallas Athena discerns and through reflecting on emotionally entangled situations allows consciousness to develop. Following are the house and sign descriptions of the goddess Pallas Athena in your horoscope.

Pallas is in the 5th House

'The Owl and the Pussy-Cat went to sea in a beautiful pea-green boat: They took some honey, and plenty of money Wrapped up in a five-pound note. The Owl looked up to the stars above, And sang to a small guitar, O lovely Pussy, O Pussy, my love, What a beautiful Pussy you are, You are, You are! What a beautiful Pussy you are!' Edward Lear's famous nonsense song says it all really. The Owl was wise, practical and poetic. What more could you want? With the goddess Pallas in your fifth house, the answer is not much more!

Like Lear, you have a wonderful sense of nonsense and a sound appreciation for the power of poetry, but you also have a practical side. Therefore you have the ability to put your many creative and original ideas to good use. Like Lear, you can write stories, imaginative or serious. You can write for children or adults. You can also create other works of art if you put your mind to it. Your challenge is to find your artistic talent and practice it. You may also be adept at helping other people express their creative ideas. Perhaps you are skilled at marketing and publishing other people's original works? Or are you an able producer or director of fine works? You may have a love of crafts and enjoy knitting, crocheting, quilting or your own personal favorite craft as a hobby. Whatever your chosen endeavor you are able to deal with others fairly, nurture their ideas and encourage expression. Like Cinderella's fairy godmother you have the ability to spread a little magic in other people's lives.

Children are also likely to play a prominent role in your life, either your own or other people's. You are even-handed when it comes to dealing with children and make a good teacher, particularly teaching arts and crafts. But it is the beauty and innocence in the world that motivates you. You feel an urge to be useful, to help others believe in the impossible and to reach for the stars either through the manifestation

of their own work or through the expression of your own.

Pallas is in Gemini

You are intelligent, quick thinking and brilliant in any field that demands sharp thinking, debate and tactics. However, you may be highly aggravating for your loved ones, because of your love of a good argument. You enjoy the cut and thrust of a good discussion, arguing your point until others are exhausted (or perhaps have retired hurt?)

Of course, occasionally you will meet your intellectual match and sparks are ignited. Finally you have found a soul mate, someone who understands your independent mind and your need for freedom of expression. You like to sharpen your mind by testing your ideas on other people, but this is not always possible. Therefore you may enjoy sparring in a debating team, taking on a public speaking role or tackling the challenges of a sales job. The strategies and policies of politics may also appeal. You have the ability to focus on reason rather than emotion, which can be an advantage in the halls of parliament.

Any job that provides intellectual stimulation is likely to appeal. On a more personal front, reading, academic study, and writing are pastimes that may satisfy your quest for knowledge. Trivia quizzes, brainteasers and crossword puzzles may also appeal. Albert Einstein once said that 'imagination is more important than knowledge'. This is your challenge with the goddess Pallas in the sign of Gemini. You are keen to learn as much as you can. In fact you can fight for the right to freedom of information. However, you also need to learn the power of silence. Imagination, intuition and wisdom are all powerful tools for anyone on the road to education. In other words integrating your knowledge is important. Once you have risen to this challenge then you are likely to become the educator rather than the educated. You may choose to teach, sponsor a cause or become a political commentator, or an activist.

Juno - Socializing The Soul



In astrology the goddess Juno represents the status and achievement in the world that are intricately aligned with social customs and tradition. Equality in relationship is necessary at all stages of the life cycle to insure both inner and outer fulfillment. Juno's ancient legacy is equal relationship and through her archetypal experience you can become aligned with your heroic self. Descriptions of the goddess in your astrological chart follow:

Juno is in the 7th House

The goddess Juno is the guardian spirit of the marriage sector of your birth chart indicating that your marriage is likely to shape your destiny. For this reason you need to choose your life partner very carefully. Other aspects of your birth chart determine the nature of your matrimony, whether traditional marriage or a modern de facto or same-sex union. Whatever your preference, you are seeking commitment. Once you have made a pledge for all of the right reasons then it is unlikely that you will let go of this union even under great duress. You demand loyalty, fidelity, intimacy and monogamy. US Senator Hilary Clinton is a prime example of this placement of the goddess Juno. Her marriage to former US President Bill has certainly shaped her destiny and she has not relinquished her union, no matter how rough the ride. She has demanded commitment and equality.

On the other hand if you discover that perhaps you have made a mistake in your choice of spouse then you are likely to try to adapt your own behavior rather than relinquish your union. You take your marital commitment seriously and expect reciprocity. An ill-fated union is likely to end badly, particularly if betrayal is the theme. Infidelity or deceits are likely to attract your wrath. Emotional rage is not uncommon in the event of a partner's lack of loyalty, whether this has been momentary or constant. You will find it a real challenge to rise above the volcanic eruption of emotions that are part of this goddess' influence. You would be well-advised to seek a more objective counselor in order to help you work through your feelings of rage and betrayal. Allow the goddess' influence to empower you for greater good, enabling you to protect yourself from your spouse's actions and move forward with your own life. Learn your lessons so that you can choose your next partner more wisely, because you are likely to seek another partner. Marriage and commitment are cornerstones of your life, whether this is a traditional marriage or a more unconventional union.

The goddess Juno is challenging you to break the social norms in your marriage and to find your true soul mate. Therefore equality is important. You seek love and equal status in your marriage, a sharing of responsibilities and freedom. The goddess Juno and her husband Jupiter (Zeus) fought battles for supremacy within their union. If you are fortunate then you enjoy a marriage of equality, a true meeting of hearts and minds. As a team you are impressive. Your marriage provides bounteous rewards for you personally and professionally. However, if you are not so fortunate then you could fall prey to struggles for parity within your marriage. It is important that you both have equal opportunities, and you are likely to experience anger and resentment if your spouse does not treat you like an equal partner. Any lack of fairness is likely to result in your marriage resembling a battlefield, with both of you struggling for supremacy. If separation or divorce is the ultimate outcome then you may be reluctant to marry again, preferring to be alone rather than give someone such power to shape your destiny. Your goal then becomes to ensure both inner and outer fulfillment on your own personal journey.

Juno is in Cancer

Your role as a spouse and parent are pivotal. In some cases they may seem intertwined. In other words you are such a nurturing influence on other people that you take care of your partner and your children in the same way. Cooking, cleaning, and nursing are likely to be ways in which you communicate your love for your spouse and children. Your spouse may need a lot of attention because of the nature of his or her job or personality or as a result of a disability or illness. On the whole you enjoy the role of nurturer; however, you are likely to weary of your burden unless there is a very good reason for your spouse to be so dependent on you.

You also need to feel a strong commitment to your marriage and at times you also need to feel supported by your loved one. A little tender loving care goes a long way towards rewarding the amount of time and energy that you expend on caring for others. You don't like to feel that other people are using you, usurping your kind and loving nature. You may experience periods of emotional rage if you suspect that someone is taking you for granted, being a freeloader. On the other hand the goddess Juno gives us the energy to fight to safeguard and enrich the lives of our loved ones. You have the ability to choose to concentrate on enriching the lives of those you love.

Children, either your own or your partners' are likely to feature strongly in your life. For those who believe in invoking goddesses, Juno can be invoked during childbirth for protection. The goddess Juno is seen as a light bringer who oversees the transition into marriage and parenthood, particularly motherhood. Whether you have one very special child or a whole tribe of children, you enjoy the role of parenthood and your children are never far away. If you work away from the home then your children are likely to participate in some activity at your work place. Alternatively you may enjoy living with and taking care of a large, extended family or working with children or young people. You may also choose to become a foster parent, forming a strong bond with young ones who need a guiding hand.

Vesta - The Inner Life



In astrology Vesta is the inner instinct that honors soul by giving it a sacred place, an altar, a quiet moment. She represents hospice and offers hospitality to the aspects of self that feel displaced and dislocated. As the hearth light she offers stillness, quietude, meditation and solitude in the midst of the everyday. The inner life is the container for anxiety and despair as well as a refuge from the pollution of daily life. Below are descriptions of where Vesta is to be found in your horoscope, the spheres where she seeks to be honored in your life.

Vesta is in the 7th House

All of the stories and poems that are written about divine love fire your imagination because you are seeking your own sacred fire through love with another person. If you are really fortunate then you find this love, forming a lasting bond with a loving and supportive spouse, someone who helps you discover and express your own unique gifts. In other words you have the ability to experience the love that others dream about. As author Amy Bloom said: *'Love at first sight is easy to understand; it's when two people have been looking at each other for a lifetime that it becomes a miracle.'*

However, you may lose your sense of self if you devote yourself into the service of the other and not the goddess. In your efforts to find the perfect love you may lose sight of your own gifts, sacrificing too many of your own interests in an effort to maintain your marriage. Circumstances may force you to rely on your own resources, although this may not be a comfortable situation. In some cases this placement of the goddess Vesta can indicate that you are not willing to sacrifice your own independence for marriage because you are concerned that too many of your own individual gifts could be lost in partnership. You may fear that you will lose more than you will gain.

Forming a deep and meaningful marriage may be your focus in life, but you also need to focus on partnerships in general. Your collaborative work with others can bring many rewards. Counseling, teaching or working in diplomatic circles may bring good fortune for you and those who work with you.

Vesta is in Cancer

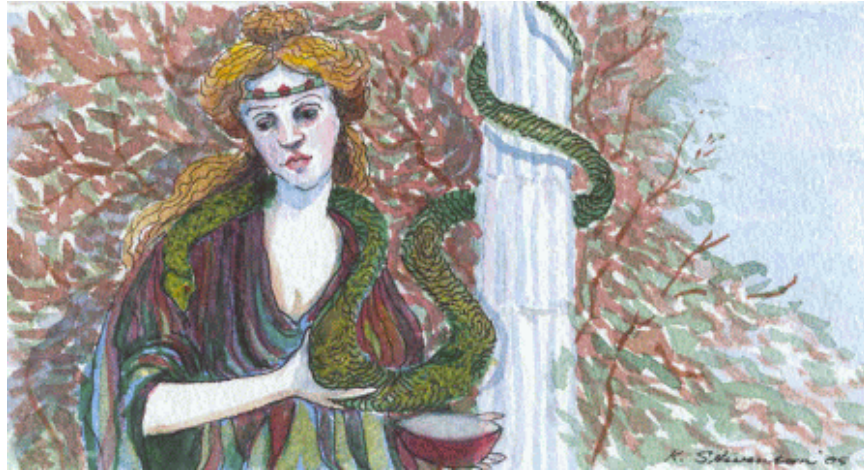
You are well aware of the role that families play in society as well as both the positive and negative effects that families can have on individual members. This is also true for society as a whole. You are able to unconditionally accept family members, foibles and all. However, this is not always true for other

people. You may or may not have suffered at the hands of your own family, but you are aware that love not judgment is vital for the growth of human beings. Families are the building blocks of society in your opinion. Therefore it is essential that people have a firm foundation on which to build their lives.

Acceptance of other people's values and family systems is also vital. These are the matters that motivate you to right the wrongs in some area of society. You are committed to supporting your own family members, even at great personal cost to your own desires. Education for future generations is one of your catch cries; however, you also need to nurture yourself. You are also committed to helping the less privileged members of society, especially disadvantaged children or animals. You may move away from home to achieve your goals, to a different neighborhood or even another country. You need to be wary of becoming disillusioned, as your own high ideals may not always be attainable. If you work with disadvantaged animals, children or families then you may find that your enthusiasm may be dampened unless you withdraw occasionally to stoke your own fires.

You have a kind heart and true purpose to show and teach compassion. You are a real treasure for your loved ones. A foundation stone for your sense of security and well being is the time you dedicate to the sacred. Therefore in the midst of administering to family and friends it is wise to remember your need for quiet, contemplation and peace.

Hygieia - The Soul Of Health



In astrology Hygieia represents health that is forged through the alliance of the natural with the supernatural, the right brain with the left, the inner world with the outer, the serpent with the soul. Hygieia reminds us that health is an archetypal image embedded in the psyche. When the soul is not nourished or attended it speaks through illness and disease. The placement of Hygieia by house and sign that follow are where the goddess seeks her expression in your life.

Hygieia is in the 2nd House

Feeling healthy, vigorous and strong are important in supporting your sense of personal worth and self-esteem. Not only does your attempt to maintain well being make you more secure, but you feel personally more valued and appreciated by others when you are robust and healthy. With Hygieia in the 2nd House there is a bonus and pay off for maintaining a healthy attitude towards well being. This shines through in your sense of self-esteem and personal worthiness.

It is important to recognize that there is a direct response between your sense of well being and feeling productive and worthwhile. Like others in your environment you may get stuck in a routine or caught in an unhealthy cycle of self-care; however, you will notice that every time you mobilize yourself towards a healthier lifestyle you feel more attractive and worthy. Therefore it is important you recognize that health is one of your greatest resources and each time you invest your time and energy into promoting a sense of well being the results are always productive. Health has high rewards and any investment in it pays off. The Latin poet Virgil remarked that 'The greatest wealth is health', an appropriate affirmation for this placement of Hygieia.

Hygieia in your birth chart also reflects the great resource of health and the need to invest in it for the long term. It is important to reflect on your unhealthy attitudes and habits that are draining both your resources and sense of self-esteem and consciously attempt to combat these. Some of these unhealthy habits may have developed early in life as a compensation for not feeling appreciated or valued. A concerted effort is needed to support a sense of your own value and worth through the discipline of a health regimen. Time spent in this pursuit is rewarded as you discover that well being opens you up to a greater appreciation of the world and its sensual pleasures. With improved health you will notice your five senses are much more alert and that sensual experiences are much more pleasurable.

Hygieia is in Pisces

Hygieia's innate urge for health and well being expresses itself through the quality of the sign Pisces which suggest the necessity to take care of the soul. In practical terms this suggests that the realm of imagination and creativity are imperative to feeling whole. Without the conscious participation in the sacred, the creative or the magical, you feel unfulfilled and yearn for what is missing. The goddess in this sign produces a healing balm through engaging with the imaginative world of feeling imagery. Therefore one of the routes to well being is through your own personal journey into self understanding following one of many avenues, whether that be the reflection on your dreams, the study of mythology or magic, or in the reverie of being immersed in a creative pursuit.

Whatever, it is important that you engage with the process of immersion into the waters of the unconscious in a way that best suits you. In mythological history Hygieia appeared when the healing cult of Asclepius began to spread across the ancient world. Here in these healing sanctuaries the goddess was petitioned for her therapeutic qualities and one of the ways this occurred was through the power of the dream. As the patient lay in the temple, the healing god would appear in one of his many guises to soothe and heal the ailment. In our contemporary world the dream symbolizes contact with the unconscious. But in order to facilitate this process in our busy lives we need to allow time and space for this to take place. Through the path of focusing on the internal world, rest, relaxation, retreat and involvement with the sacred, Hygieia makes health and well being possible. Therefore it is important that you appeal to the goddess through apportioning enough time from the busyness of your life for retreat.

You also have a healing gift being receptive and intuitively aware of other's pain and anguish. However, part of your own healing journey may be in creating strong enough boundaries between yourself and others to know more clearly when it is time to apply this gift or not. You may have been wounded by an enmeshed family that forced the sacrifice of the self, or through being involved with others in co-addictive or co-dependant relationships. But it is through this experience that you contacted and rescued your own healing abilities. Now the goddess confirms your healing potential, but also affirms your right to choose when to use your healing talents.

Ariadne - The Labyrinth Of The Soul



In astrology Ariadne represents abandonment as an archetypal process that strips away the mind's illusions in order to hear the calling of the true self. Confronted by the painful reality of being left the individual is forced to relinquish their hopes and fantasies in order to awaken to the authentic path of the heart. Ariadne embodies the soul in relationship that must first experience the painful course of the labyrinth before a divine connection can be realized. Following is the astrological thread that Ariadne weaves through her house and sign in your horoscope.

Ariadne is in the 1st House

You have a strong sense of your own talents and gifts. This is likely to have been developed at a young age. The path to self-realization may not have been an easy one. It is likely that you may have suffered a sense of abandonment at an early age. Perhaps one or both of your parents were unable to care for you because of circumstances beyond their control. On the other hand your parents may have neglected your needs, imposed their will on your tender developing personality or demanded levels of maturity because of their own shortcomings. Whatever the scenario it is likely that you suffered the pain of loneliness at a young age. The positive side of this experience is that, forced to rely on your own resources, you learned to survive on your own. You developed a strong sense of self that has stood you in good stead ever since. In other words you know your own heart and mind. Your colleagues and friends may seem to flail around with no real purpose in their working life or choose inappropriate life partners; however, you are wise beyond your years. You are well aware of the dangers that come from losing your way because of loved ones' actions. You are unlikely to let yourself be betrayed again. You choose your career path with a sense of purpose and you marry according to your heart. You are determined to maintain your own sense of self.

Ironically you may need to be wary of neglecting the needs of your spouse as you doggedly follow your own desires. You need to maintain a balance. Otherwise your marriage may falter, leaving you again on the precipice of loneliness. It is possible that you prefer this prospect to the one of losing yourself in a relationship. Compromise, not sacrifice, is the key to success.

This is a prominent position for the goddess Ariadne. Therefore if you face your sorrow and follow your own heart then you will experience divine peace. You also have the ability to teach others the benefits of

self-reliance and the path to happiness. You have an innate gift for nurturing the free spirits of young children or encouraging the spiritual beliefs of all who cross your path. Meditation, prayer, labyrinths, nature expeditions and spiritual teachings are also likely to help you reconnect with your true self.

Ariadne is in Capricorn

You have a tendency to seek security as a way of boosting your self-esteem. You work hard to have a secure job, a comfortable house and a respectable marriage. You also like to have money in the bank and a good retirement fund. You worry when your environment or relationships change, preferring to keep everything as stable as possible. The difficulty is that, by trying to maintain the status quo, you eventually lose the very thing that you seek - a strong sense of self. One day you may realize that all of your hard work may well have been in vain because you feel empty, unable to really enjoy the fruits of your labors. You need to consider making changes. A journey of self-discovery is in order.

If you try to avoid this journey then you may be forced to let go of your material acquisitions through circumstances that seem to be beyond your control. You need to rediscover a sense of passion and face your fears. Change can be liberating. Slowly but surely you can gain a deep understanding of your own true nature and seek new paths of self-expression. Instead of building castle in the sand you can rebuild your life based on passion, flexibility, joy and spiritual values. The goddess Ariadne celebrates a more intimate connection with your heart, whether that is through a personal relationship, a new creative endeavor or a new course of life.

Ariadne's thread binds your heart to the world outside your home and family. Part of your journey will be to negotiate the labyrinth of possibilities in the world until you find your vocation. When you do you, you will also find your own autonomy and authority, for you are the only author of your life script, not your parents or your partners.

Europa - The Soul Of The Earth



In astrology Europa embodies the ability to ride the bull, harness its power and give birth to its resourceful creativity. Innately she is the image of feminine power, guidance and direction. Embodying earthy instincts she knows how to cultivate the earth and create abundance through her passionate, attractive and commanding nature. How she finds expression in your life is explored through the goddess Europa's placement in your horoscope, as follows.

Europa is in the 10th House

Europa, as the bull-goddess, claims the power to construct and direct the course of her own life. You claim the same power. This power may have first been evident in your family system where success and influence were important. This prominent placement of the goddess Europa indicates that you are determined to construct a solid professional foundation. Your career and your status in the community are of utmost importance. This includes your marital status and your role as a parent. All of these things are paramount.

You are a solid citizen of the world, likely to have conservative values, although this will depend on other facets of your birth chart. You may be distracted from your professional goals once in your lifetime, but you quickly reclaim your own independence. Your decisions are likely to be made with careful consideration of the long-term consequences and benefits. You do not live for the "quick fix" but rather enjoy the process of planning, working and achieving.

You are likely to seek a marriage partner who supports and enhances your career choices. Your friends are also likely to be important social contacts, associates who add to your status. You do not suffer fools gladly when it comes to your career and your lifelong goals. You do need to be wary of becoming too ambitious, working at the expense of your private life. You need to also seek spiritual values, as well as material ones. Otherwise you could run out of energy and breakdown, forcing a reassessment of your life goals.

Learn to see the beauty in your work, listen to your heart as well as your mind and kindle the creative fires. Ask yourself questions such as, 'how can I be of service to others through my work?' As US President John F Kennedy once said, 'Ask not what your country can do for you - ask what you can do for

your country.' Then you really experience the joy that comes from a higher sense of purpose.

Europa is in Libra

There is a part of you that longs for divine experiences - through love, the arts, spiritual pursuits, the intellect or anything that provides an escape from the daily grind of life. As a result it is very easy for you to be swept away by your passion for another person. You fall in love and give your heart to your lover. You immerse yourself in every word and deed of your loved one. Only the most sublime poetry can capture your feelings of devotion. This is both wonderful and alarming at the same time. . The experience of losing yourself in love is exhilarating while the romance lasts. However, as author and poet T S Elliott says, once the romance has faded you then need to come down to earth and assess your relationship. It is possible that you can then form a loving and lasting bond. If this is the case then you are one of the lucky ones finding true love with a supportive mate. However, in some cases you suffer rejection and you find that you have lost an important component of yourself. Your self-esteem is adversely affected. It feels as though your loved one has walked away, taking a vital part of you with them. Then you are faced with the task of re-establishing your relationship with yourself.

Like Europa the partner who seduces you away from your secure surrounds may also introduce you to a new world of wonder and possibilities. It might be through the auspices of someone else that you are called to where you need to be. For you some relationships need to be transitional to set in motion your destiny. In fact this process of annihilation and rebuilding through love is a significant process of growth. At times you may feel lost without the love that sustains you, but you are forced to expand your self-knowledge and your horizons each time. Once you have established a strong and loving partnership, then you are likely to seek this growth through a passion for the arts, beauty, counseling, diplomacy, fashion or anything that sparks your aesthetic interest. You may pursue an academic career, publish a work that inspires others or travel to foreign lands.

Pandora - A Gift Of Hope



In astrology Pandora reminds us that embedded in every disaster is the gift of renewal through the auspices of faith and hope. Illness, destruction, old age and pain are part of feminine wisdom and this knowledge stands in direct contrast to masculine fantasies of a Golden Age and Garden of Eden. How she enters our life is reflected in the placement of the goddess. Descriptions of the goddess by house and sign in your horoscope are next.

Pandora is in the 10th House

There is no doubt about it - you are ambitious! You are eager to make your mark in society, to contribute in a meaningful way. Your career is paramount. From the moment that you enter the workforce you are a force to be reckoned with. Professional qualifications and certificates adorn your work environment. Awards and trophies line the shelves. Those in authority welcome your work ethic, although your co-workers may be somewhat overwhelmed, perhaps even resentful and jealous. You are unlikely to notice any ill feeling, because you are on a mission, determined to leave no stone uncovered in your efforts to achieve your professional ambitions.

Marriage is also like to feature strongly in your life, contributing to your social status. You may marry a colleague, someone who recognizes and supports your position in society. Alternatively you may marry someone who enhances your public life. Children are a consideration only if this suits your life plan.

Professional zeal is admirable but at some point in your life's journey you are likely to realize that you have concentrated on your public life without paying head to the consequences for other aspects. Your private life also needs attention. Your career may come to a sudden and unexpected halt as a result of ill health or at the behest of a loved one. Alternatively you may start to feel tired, weighed down with responsibilities and tasks that no longer hold any meaning. When this happens the time is ripe for a reassessment. You need to pay attention to the warning signs. Is your heart really in your career? Are you following your true dream? Do you have the right balance between career success and personal satisfaction? Are you including your loved ones in your plans? Once you can answer 'yes' to these questions then you are filled with renewed energy and hope. Your faith in yourself and your goals is an inspiration. This is a prominent placement for the goddess Pandora and so you are able to inspire all who work with and for you.

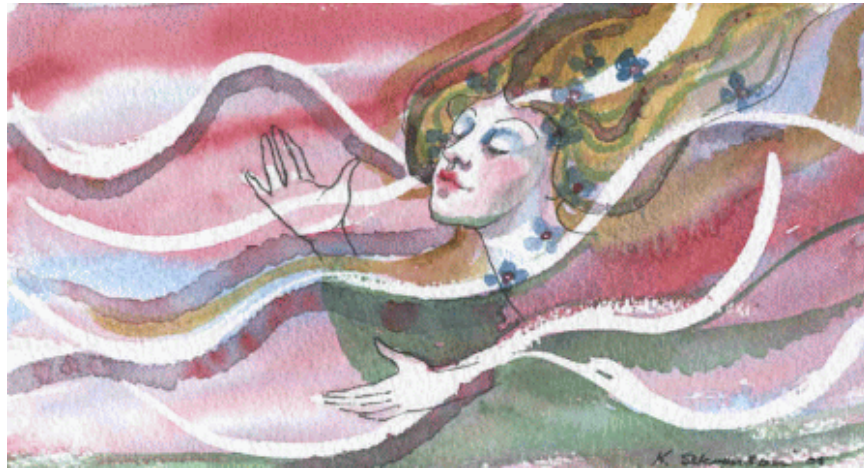
Pandora is in Libra

You are a born mediator. You sit back and observe the comings and goings and the interactions of your colleagues, friends and family members and then you can't help yourself, you... well, you meddle. You dive into the middle of conflict and try to bring two parties together. You are well aware that sometimes you seem to make matters worse, stirring the emotional pot. This awareness doesn't seem to act as a deterrent. You are ever hopeful that you can help people to solve their problems.

Fortunately in most cases you are correct, particularly when it comes to misunderstandings between different parties. Your ability to listen to each side of the story, hold your counsel and help each party see things from a different point of view is generally conciliatory. You have the gift of being able to bring a new perspective to any situation, a point of view that others may have never thought of. Therefore you would make an excellent diplomat or mediator.

On a more personal level you are often the adept matchmaker, helping many a couple on the path to true love. You are a romantic at heart and enjoy the prospect of a happy couple and are pleased to act as go-between. If only you could do the same thing in your own love life. As a single person you seem to be attracted to the wrong people. Unrequited love is far too often your plight. Your strong desire for romance may be frightening to potential lovers. On the other hand you may be seeking the perfect partner, overlooking the values of friendship and affection in your quest for passion. Once you are married you may have difficulty accepting the mundane aspects of your union. You need to create romance and excitement in your marriage from time to time. You also may develop a love of one or more aspects of the arts such as the theater, dance, art or music. Again you have a tendency to go overboard, having some difficulty in balancing the practicalities of life with your need to explore your creative interests. The key is to inject stimulation into your relationship, be spontaneous and challenge your partner to keep the relationship exciting.

Mnemosyne - The Soul Of Memory



In astrology Mnemosyne, the goddess, helps us remember images and impressions from previous phases of our life in order to give meaning, context and insight into these experiences. She acts as a loosening agent, allowing buried complexes, taboo feelings, repressed memories to breathe again to find some place in the sunlight of consciousness. She connects passages of time together. Links can be made back to times in the previous cycle allowing space for the process of reflection and musing. Following is a report of how Mnemosyne brings the muse into your life experience.

Mnemosyne is in the 8th House

You are a prophet. This can be as simple as having the foresight to see the consequences of other people's actions or as miraculous as having the gift of clairvoyance. The extent of your gifts depends on other aspects of your birth chart, but you are gifted in the 'invisible' arts. Psychology, prayer, meditation, alchemy, magic, astrology, divination, criminology, and stock market trading are just some of the areas of interest that may spring from your talent for foretelling the future. This talent of yours actually stems from deep within. This could perhaps be your own childhood experience, but it is more likely that you were born wise. You may or may not consciously remember life before your birth, but some well of knowledge seems to dwell within, enabling you to draw on an innate wisdom.

Your talents may not be appreciated within your immediate family or circle of friends. As a child you are likely to be the one who states an honest fact only to find out that the adults would rather that you had kept quiet. As you mature you are quick to recall the discomfort and learn to keep some of your observations quieter than you would otherwise like. Nevertheless there are times when you are asked for advice and your gift for telling the truth and predicting future trends is not always appreciated. As Matthew says in the Bible, 'a prophet is not without honor, save in his own country, and in his own house'. You may have to travel further a field than your own family, or hometown, before being truly appreciated as a gifted teacher, preacher or prophet. As mistresses of healing and prophecy the Muses inspired and taught others to contact a deeper knowing through their imagination and creativity which guarded the wellspring of memory. You may choose to teach metaphysical matters, work as a psychologist, start your own business or earn your money through stock or property investment. You enjoy stepping into the unknown, because for you very little is unknown. You follow your instincts.

You are also happy to share your knowledge with your marriage and business partners, as long as these important people are trustworthy and treat you with respect. If you feel that you are being used, taken advantage of, then you are likely to leave, taking as many resources with you as possible. You have a long memory when it comes to betrayal and need to be careful that you don't try to exact revenge. Although you are gifted at foretelling other people's lives, and the consequences of their actions, you may not be able to counsel yourself in the middle of intense emotional situations. Prayer and meditation can be highly beneficial during transformational moments such as separation, divorce, legal matters, birth and death. You are likely to be a very understanding counselor, listening and remembering details of other people's stories. However, you also need to remain open to joyful experiences. You may need to rely on your memory of pleasurable moments in order to help yourself, and others, through the portals of change. Your own experiences deepen your ability to empathize with others. This remains the goddess Mnemosyne's calling to you - to teach others intimacy, by facing the depths of sadness as well as the heights of joy.

Mnemosyne is in Leo

You are a born storyteller, particularly when it comes to telling your own story. You are an individual, likely to break away from traditional roles in society. You respect your roots, but you also recognize your need to separate from convention and tell your own story. The goddess Mnemosyne entreats us all to look deeply into our selves, to remember our true path and live our lives honestly. She acts as a loosening agent, allowing buried complexes, taboo feelings, repressed memories to breathe again to find some place in the sunlight of consciousness. You have a gift for allowing your own buried feelings to come to be expressed, as well as encouraging others to articulate themselves. Some may even say that you are soothsayer.

Depending on other aspects of your chart, you may indeed be psychic, but this goddess enables you to detect other people's unexpressed desires and enable them to find the courage within to break free of their personal and societal taboos. You are grateful for all that is given to you, and are happy to help other people but you also recognize your need to follow your own dreams. There is an Italian proverb that suggests gratitude is the memory of the heart. You have the courage to follow your own heart. Your love of storytelling may manifest in a talent for poetry, dance, music, theater or art. If this is the case then you are likely to be revered for your talents. As Homer says in 'The Odyssey', 'among all men on the earth bards have a share of honor and reverence, because the muse has taught them songs and loves the race of bards.' You need to be wary of squandering your talents, listening to your ego rather than to your soul-felt desires. Your attention-seeking ways may prevent you from making the right choices. You need to listen, as much as you speak; praise as much as you seek appreciation and honor other people's stories as much as you seek to speak your own truth.

You find meaning in symbols embedded in the fragments of a song, a myth, or a fairy tale, or perhaps in everyday life. You need to also find your creative voice. Mnemosyne finds her voice through the poetry of images revealing her memoirs through a dream, a feeling, a response, a longing or a sudden thought that darts into consciousness. Stay tuned to these symbols and your life takes on a whole new meaning. You find a creative voice that cannot be quietened, memories that become your own private muse and synchronicity that propels you into a life of purpose.

Hecate - The Soul In Transition



When the goddess Hecate is prominent in a birth chart she depicts the area in which we are at crossroads in our lives. Time can sometimes seem suspended while we reorient ourselves to a new way of being. Confusion, loss and disconnection are natural moods during this phase as we let go of what has been in order to greet what may be. By house position Hecate would suggest where you will encounter her in your life; by sign she colors your life with magic and mystery. Following are the astrological descriptions where Hecate enters your experience.

Hecate is in the 6th House

You are a born meddler, in the nicest possible sense of the word. You can be found concocting recipes, lotions and potions in the kitchen while at the same time juggling an intense conversation with one of your friends or colleagues. Alternatively you are organizing other people's diaries, coordinating their activities and generally handing out sound advice about how they should be living their lives. You like to know what is going on in people's daily lives.

At the same time you like to get beyond the social chitchat to the nitty gritty. Some may call you intense, but you prefer to think of yourself as caring, warm, heartfelt and wise. You like to make time in your schedule for people and their concerns, particularly momentous occasions. Therefore you are interested in listening to people's genuine thoughts and feelings rather than superficial gossip. You like to offer advice on how your loved ones can make a difference in their lives. You may offer practical tips, or perhaps soulful ones. Your friends, family and colleagues are like your flock. As far as you are concerned they need tending on a daily basis whether this is a quick check-up phone call or a relaxed, prolonged shared meal. You are likely to be quite adept at cooking, nurturing others with your special recipes. You may also be interested in earning your money through cooking, catering or events management. Herbs may also be intriguing. The goddess Hecate has been linked to many herbs, probably because of her association with witchcraft. She viewed herbs as sacred medicine. Some of the herbs include garlic, mint, dandelion, lavender, thyme, myrrh, and Mugwort. You may earn your money through naturopathy, aromatherapy, massage and other healing modalities linked with plants and herbs. Several poisons such as belladonna, aconite and hemlock, are also associated with this goddess. Hence you may have an interest in homoeopathy. On the other hand you may enjoy working as a secretary, looking after the personal and professional interests of an employer or co-workers. Depending on other influences in your birth chart, you may make a good general manager. Dentistry may seem intrusive to some, but you may

enjoy the opportunity to delve into people's mouths and heal their aching teeth and improve oral hygiene. You may also work with animals, particularly enjoying the company of cats and dogs.

The goddess Hecate watched over the flocks. In ancient times, a healthy and thriving flock of animals was equivalent to survival. You are likely to appreciate the important role that animals play in people's lives, either as domestic companions or food on the table. You may have strong views either for or against vegetarian diets. Perhaps you earn your living from farming, or rely on the rural community for your livelihood. Whatever your occupation you are keen to be involved in the very heart of your work and the people employed. You want to play a consistent role in the lives of your family, friends and loved ones. This is a deeply felt need, part of your spiritual beliefs, helping both your own process of transition through life's various stages, as well as other people's progression.

Hecate is in Gemini

In Australia parrots are noisy, active and brightly colored birds that glisten in the sunlight with their coats of bright greens, reds and yellows. They chatter loudly as they flit from branch to branch in the treetops and are a wondrous sight when the full rays of the sun catch their coats. They seem to inspire joy, hope and a sense of wonder in the variety of bird and animal life in the natural world. The goddess Hecate offers you a similar disposition in the sign of Gemini.

You have the ability to be a bright, vivacious communicator inspiring others through the sheer force of your personality. No matter what path you choose to take, and you are likely to be tempted by a wide variety, you are an uplifting presence wherever you take flight. You delight in books and maps and are likely to spend many an hour divining the keys, gleaning facts and generally getting familiar with an area via a map. Perhaps this is because you have a lousy sense of direction, or more likely it is because you love the stimulation of having many choices in life. Hecate was the goddess of navigation and the sign of Gemini suggests many directions. Therefore you love the feeling of freedom that comes from exploring new destinations, even if these are just down the road. You are likely to take many journeys during your lifetime. This could simply mean that you travel for your work. However, it could also indicate that you go on a spiritual quest. For this reason mazes and labyrinths are likely to attract your attention, particularly sacred labyrinths. Labyrinths have been around for thousands of years but today they are constructed in many forms and are used for reflection, meditation, and prayer, all of which can be of great benefit for you. The sign of Gemini suggests restlessness. Your powerful message needs to be communicated and you are eager to make sure that as many people as possible are reached. Do you take time out to rest and reflect? Yes, the goddess Hecate is calling on you to teach others about the joys of the freedom of the mind and the many spiritual opportunities that exist. However, she is also urging you to pay attention to your own spiritual gifts. You can inspire as many people as you like, as long as you are fully utilising your capacity as the ruler of the crossroads. Indecision and procrastination are not options, but neither is rash behavior. You need to take considered action, knowing that your choices will help spark ideas and eventually deliver the answers that you seek for both yourself and others.

Cassandra - The Prophetic Soul



Oracular knowing springs out of the collective through an unconscious and unbound participation with everything in the environment. When boundaries are blurred and the veil between the worlds is lifted we enter into a participation mystique with the spirits of the world beyond us and may be called to act as a vessel for their message. Cassandra in your horoscope reveals where you are sensitive to the pattern of the goddess. Following are the placements of Cassandra in your horoscope by house and sign.

Cassandra is in the 11th House

You are a caring and thoughtful friend. As a result many friends and acquaintances surround you. You are able to predict the needs of your friends and lend a helping hand in times of joy and sadness. Suffice it to say your friends play a prominent role in your life. Therefore it is a strange phenomenon that you sometimes feel like the odd one out in your circle of friends. You are comfortable when in the company of one or two friends, but large groups can make you feel a little uneasy, perhaps even misunderstood. The reason for this is that the goddess Cassandra was both blessed and cursed. She was blessed with the gifts of prophecy and wisdom. You are blessed with these gifts and they shine forth in the company of your friends. However, Cassandra was also cursed. Her curse meant that others did not hear her words of wisdom. Hence you sometimes feel that your friends are not listening to you. The lesson is to express your thoughts and opinions when asked and then to give your friends the freedom to live their own lives. You may be able to see the consequences of their actions long before they can. This is your gift. You need to use it to support and uplift your loved ones, not condemn them if they don't listen to your warnings.

Your immediate circle of friends can benefit from your prescience. However, you are also likely to be gifted in the area of marketing, public speaking, networking, socializing, event organizing and other such large-scale group activities. Unconsciously you may become the voice of a group expressing what everyone else instinctually knows but is afraid to admit. You reveal what needs to be known but not always what wants to be identified. Group psychology is complex and you need to be aware that often the congregate shadow is able to express itself through the faculty of your sensitivity.

In a woman's chart this placement of the goddess Cassandra can indicate that you need to be a little wary of forming a strong bond with a male friend to the exclusion of other social contacts.

In a male's chart the goddess Cassandra in the 11th house can depict a female friend who is a much-appreciated confidante and support.

Cassandra is in Scorpio

You are perceptive, intense and wise, understanding the true nature of human interactions. You are not comfortable with social chitchat, preferring intimate conversations. This is because you can see beneath the layer of polite conversation to the truth of a person. Other people's desires may be hidden deep in their own subconscious but you can detect their true nature. You may also have the gift of prophecy. Sometimes this awareness feels more like a curse than a blessing. Other people may not appreciate your honest appraisal of their motivations, particularly when the darker forces such as jealousy, lust, greed, and revenge are revealed. Truth is never comfortable. In fact your friends, colleagues and loved ones may not realize that you are speaking the truth, so blind are they to their own subconscious motivations.

As a child you are likely to innocently reveal the truths of the adult world around you. You may even be removed from adult company, knowing that you have said something wrong, but not really understanding what. As an adult your awareness of your own powers of perception sharpen and you learn when to speak out and when to remain quiet. You become the holder of other speaker's secrets, a wise counselor and an advocate for intimacy.

Trust is also a subtle theme in your life. You may distrust other people's true motives, given your power for discerning the truth. Others may equally be distrustful of your ability to see beyond their social façade. As a result you may find that you gather a small circle of loyal peers and loved ones, creating an emotional reserve with acquaintances and other associates. As you mature you learn when to contain your feelings and when to disclose them. Over time you have become wiser about timing your revelations and knowing when it is appropriate to reveal the truth and when it is best kept them concealed. As a healer you know the powerfully transforming quality of catharsis that comes from disclosure, yet you also are aware of the irreparable damage a secret can unleash. You hold the power to make the decision to heal or hurt through how you unveil your knowledge.

Medea - Herbalist And Healer



When Medea is prominent in a birth chart she reveals the need to explore the ancient feminine traditions of herbalism, witchcraft and magic ritual. Intuitively we know the natural cycle of the body and what it needs to be well. Medea reminds us to honor the ancient custom of relating to the plant world, the wisdom of nature and the powerful healing and transforming properties embedded in the natural world. Instinctually the witch is the impulse that draws us to remedies and potions at the right time and is the urge to create ritual and ceremony to evoke the powers of the goddess. Following are astrological account of how the force of the goddess may be revealed through your horoscope.

Medea is in the 8th House

When Medea brings her magic to the 8th house she unleashes your commanding ability to make powerful things happen to other people. When you're engaged and connected to someone else you have that ability to emotionally empower them to make the right decisions, move through difficult times or reconcile themselves with uncomfortable situations. On a more pragmatic level you may have the ability to help others become more financially resourceful, change a static business situation into a dynamic one, or support a transforming process that allows an individual to move forward. You have a potent and therapeutic gift to exchange with others.

However, you must feel valued in the process or a volcano of feelings may erupt. If it is an emotional exchange you need to feel respected and honored; if it is a commercial venture you need to be remunerated. Without this equal exchange or feeling met by the other, you will feel betrayed. Therefore it would be important to nurture and shelter your powerful insights and instinctual knowledge, as they are transformational and intense. Like Medea you may be able to help others with their heroic labors but you need to be aware of the cost to yourself in the process.

Part of what informs your uncanny sense of knowing is being in touch with forceful feelings that must be valued. You need to feel a sense of exchange with another in order that your deep-seated capacity for intimacy and containment can be directed towards an honest outcome. You have the instinct that makes a trusted confidant, a profound therapist, a transformational coach and a powerful partner. However, these gifts are not presented to you without your own heroic journey. Coming to understand your own depths and ability to create dynamic shifts in others has arisen out of your own journey through betrayal and loss. Even though these may not be experiences you may relate to, they are feeling states you're

intimate with. It is this ability to delve deeply into the darker side of the feeling life where you have discovered your own healing and transformational qualities. Your inheritance is the uncanny ability to penetrate into the territory of deep knowledge and be able to utilize it for your and others growth.

Medea is in Leo

In the classical account of Medea's story, told in the enthralling version by Euripides, the heroine is betrayed by the man she loves. Then, as an act of revenge she takes their children away from him so he will lose contact with this most precious aspect of his life. Medea's vengeance is designed to break Jason's heart. The tragedy confronts the human experience of rage, betrayal and the pain of a broken heart. While your destiny will not be like Medea's you will recognize the motif and pattern inherent in the story. Underlying Leo is often the story of a broken heart or the loss of innocence brought about by the pain of experiencing love for the first time. With Medea in this sign you know the potency of your feelings of attraction and love as well as your reactions to disloyalty. Your feelings of love are intense and passionate. Medea highlights the ability to manage these feelings as we can not afford to be devoured or overwhelmed by infantile rage. You have a great inner strength supported by the will and courage to strive to be a loving human being.

Like Medea your fate may also involve children. Your strong protective instinct may lead you into parenthood but generally it suggests safeguarding children. Whether this fate leads you into the teaching, child care, or social services involving children you are called on to use your strong feelings and convictions to shield children from harm. However, it is not only the child in the outer world that captures your consideration, it is also the joy and playfulness of the inner child.

A channel for the passionate urge to express yourself can come through a creative or passionate endeavor. Whether you find yourself on stage as the spokesperson for a valuable cause, a coach or instructor or the theatrical voice of a tragic character you have an impressive ability to express powerful thoughts and feelings, especially when what you are expressing is close to your heart.

The heart is where Leo is most sensitive to stress. Medea's herbs like borage are helpful for strengthening the heart. Plant some in a corner of the garden where it can grow wild, then harvest it for tea. While you might be thinking of redesigning your garden create some space for sunflowers or marigolds to brighten the mood. Hawthorn berries are also good for blood pressure irregularities while flower essences that complement the goddess in this area are Vervain and vine. Petition the goddess by using lots of garlic in your cooking. Get used to using walnuts as a power supplement to your salads. Your Tarot card is Strength, which encourages you to draw on impassioned feelings to express yourself, and to discover a life-affirming creative outlet where you can shine and be noticed.

Conclusion

When using this report, please bear in mind that, inevitably, every chart will contain some contradictory influences. Usually it is the responsibility of an astrologer to synthesize these apparent contradictions in order to present a cohesive and meaningful interpretation of the dilemmas of the chart.

Please also be aware of the fact that each person has positive and negative influences in the chart, and therefore in their lives. The challenge is to accept and overcome the negative influences, so that we can successfully focus on the positive traits. This report outlines both influences, and therefore parts may be difficult to accept. Any advice given is meant to be an aid to people taking responsibility for their own lives. The ultimate decision rests with each individual. The authors and publisher accept no liability for any adverse effects of this report.

This report is meant more of an introduction to the wonders of the asteroid goddesses rather than a complete course in its intricacies. Further studies, or a consultation with a professional astrologer, are encouraged to explore this most ancient scientific and philosophic tool. We hope that you will discover a common thread that gently winds its way through the 12 Goddess placements in your chart, a thread that inspires you to continue to follow your dreams and discover the Goddess or God within.

The text in this report has been written by Australian astrologers Brian Clark and Stephanie Johnson.

Brian Clark is one of the main tutors of a four-year program in applied astrology for Astro*Synthesis. He has been active in astrology since 1972, having served as National President for both The Fraternity for Canadian Astrologers and The Federation of Australian Astrologers FAA. He has twice received awards from the Canadian astrological society, received the Education Award from the FAA and been nominated three times for the International Regulus Award. Brian also lectures on myth and conducts tours to sacred sites in Greece through Odyssey. Brian has a BA from Sir George Williams University in Montreal, Canada and a Post Graduate Diploma in Classics and Archaeology from Melbourne University. He is the author of *The Sibling Constellation* (Penguin, 1999) and a contributing author to *Intimate Relationships* (Llewellyn, 1991), books that have also been translated into French and Japanese. A new book called *Celestial Tarot* is soon to be published by US Games Systems, Inc.

Stephanie Johnson is a founder of Esoteric Technologies, the company that creates the Solar Fire suite of astrology products. She has helped create, design, develop and author Solar Fire and the other products. In particular she is the author of many of the Solar Writer range of astrology report writers. She is also the Marketing Director for Esoteric Technologies. Stephanie runs her own Seeing With Stars astrology consultation business as well as editing the Australian Data Collection. She holds a Federation of Australian Astrologers' Practitioner's Certificate and Diploma and is a member of the Federation of Australian Astrologers. She is a student of Medieval Astrology and the Ancient Wisdom teachings. She has lectured at national conferences, and her astrology articles have appeared in Australian publications including the FAA Journal and the Astrological Monthly Review. Before commencing her professional astrology career Stephanie was a journalist for 15 years in Australia, England and the USA.

Kay Steventon is a Melbourne based artist/astrologer. After graduating from R.M.I.T. in 1980 with a Diploma Fine Art, Kay gained the F.A.A. Professional Astrologer qualification, and 'Living The Tarot' Diploma. Since 1966 Kay has had many solo and mixed exhibitions in Melbourne and overseas, specialising in symbolic art in 1992. Her first Tarot deck and book, 'The Spiral Tarot', was published in

1998. Kay 's second Deck, 'Celestial Tarot', was published in 2003 with the Celestial book written by Brian Clark. A 52 card deck, 'Goddesses and Heroines' is due to be published 2005, again a joint effort by Kay and Brian Clark.

If you would like further information please contact Esoteric Technologies Pty Ltd PO Box 159 Stepney SA 5069 Australia. Phone/Fax (08) 8365 1117. Email: sales@esotech.com.au Website : www.esotech.com.au

Copyright: Brian Clark and Stephanie Johnson (Seeing With Stars P/L)